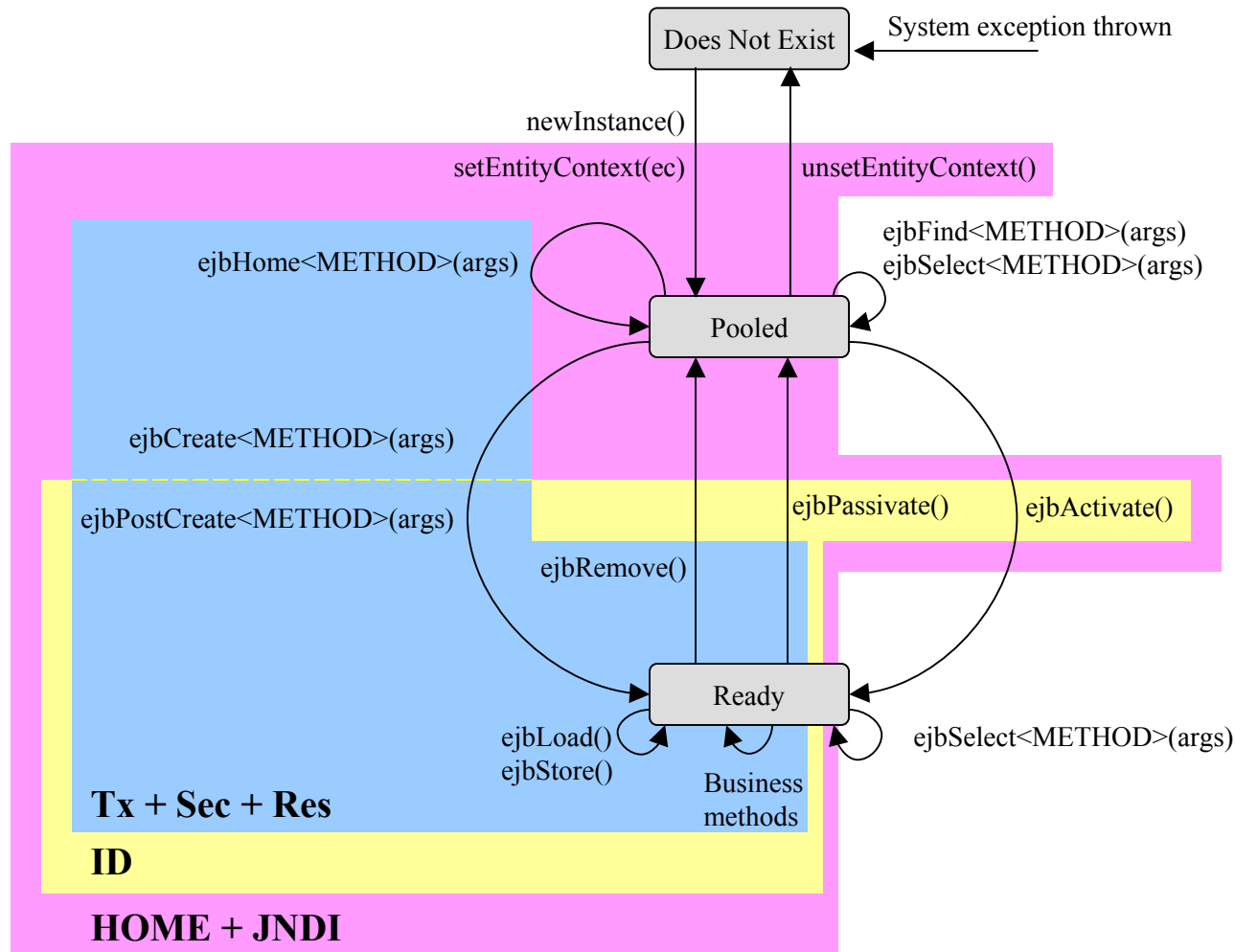


# Entity beans



## Legend:

**HOME:** access to `getEJB[Local]Home()`

**ID:** access to `getEJB[Local]Object()` and `getPrimaryKey()`

**Tx:** access to `getRollbackOnly()` and `setRollbackOnly()`

**Sec:** access to `getCallerPrincipal()` and `isCallerInRole(String)`

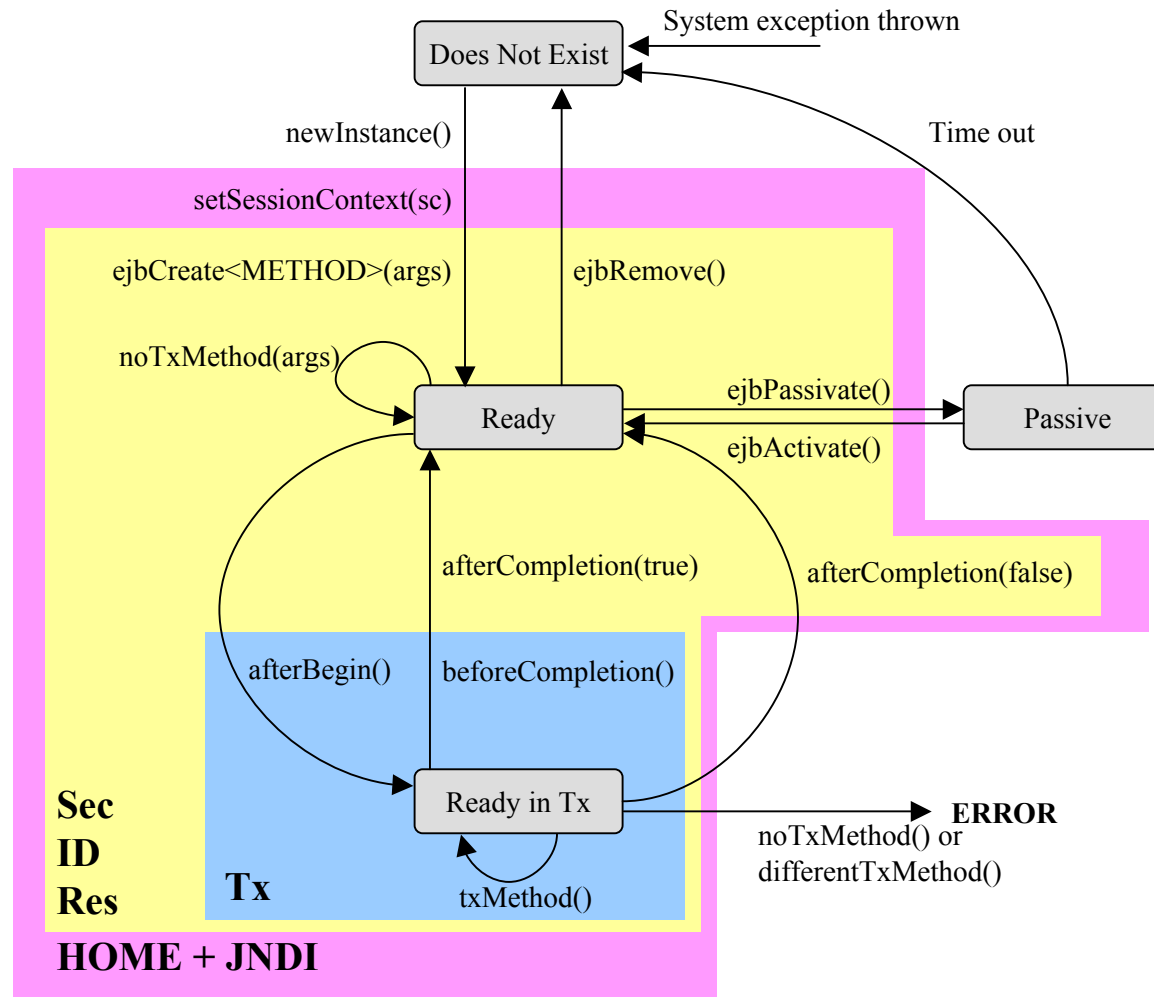
**JNDI:** access to `java:comp/env`

**Res:** access to Resource manager and enterprise beans

## Note:

`ejbFind` and `ejbSelect` methods are not implemented by the bean provider, so no operations may be invoked from them.

# CMT Stateful session beans



## Legend:

**HOME:** access to getEJB[Local]Home()

**ID:** access to getEJB[Local]Object()

**Tx:** access to getRollbackOnly() and setRollbackOnly()

**Sec:** access to getCallerPrincipal() and isCallerInRole(String)

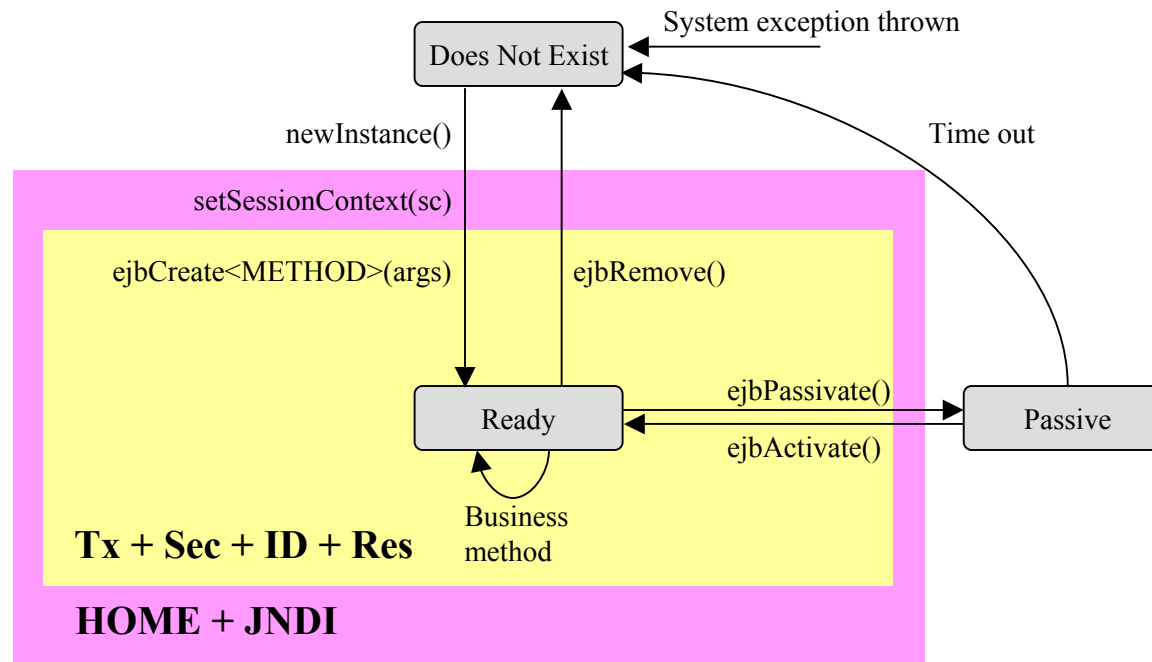
**JNDI:** access to java:comp/env

**Res:** access to Resource manager and enterprise beans

## Note:

afterCompletion belongs to the SEC and ID groups but it does not belong to the Res group!!

# BMT Stateful session beans



## Legend:

**HOME:** access to `getEJB[Local]Home()`

**ID:** access to `getEJB[Local]Object()`

**Tx:** access to `getUserTransaction()`

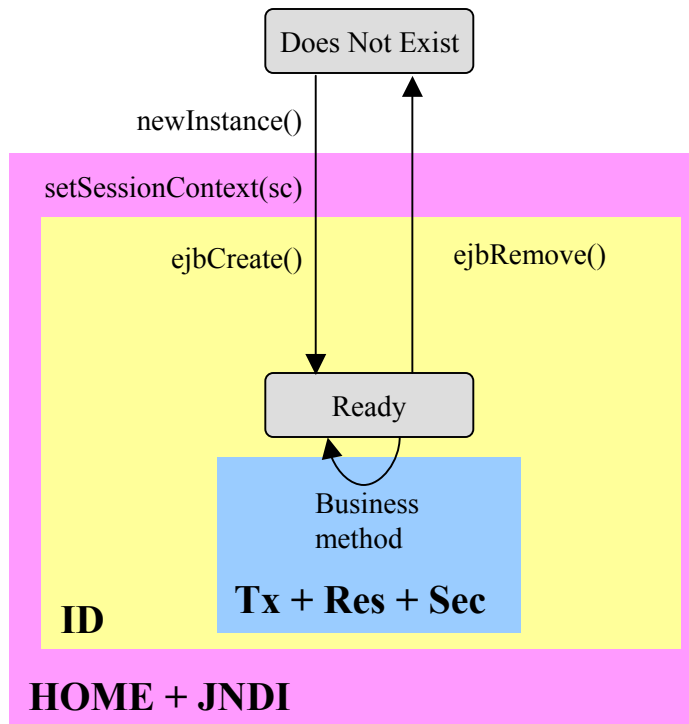
**Sec:** access to `getCallerPrincipal()` and `isCallerInRole(String)`

**JNDI:** access to `java:comp/env`

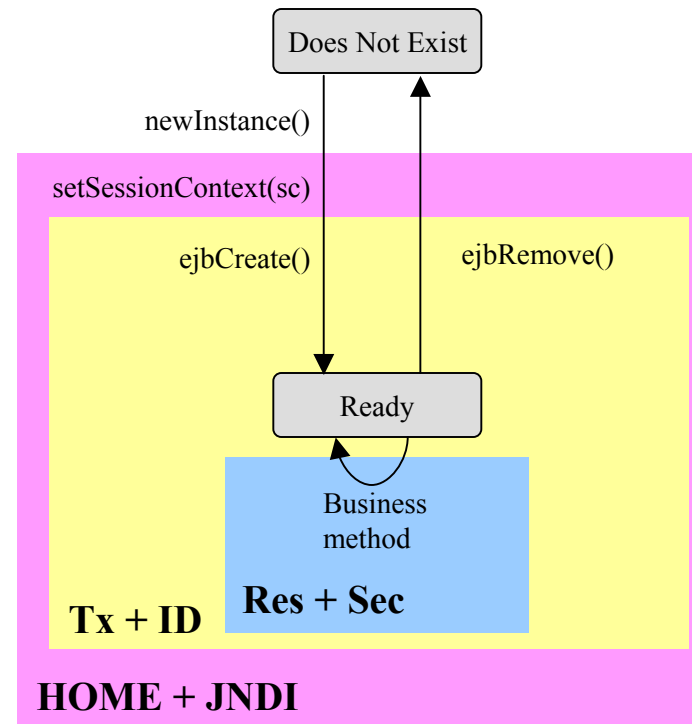
**Res:** access to `UserTransaction` interface, Resource manager, and enterprise beans

# Stateless session beans

## CMT



## BMT



### Legend:

**HOME:** access to `getEJB[Local]Home()`

**ID:** access to `getEJB[Local]Object()`

**Tx:** access to `getRollbackOnly()` and `setRollbackOnly()`

**Sec:** access to `getCallerPrincipal()` and `isCallerInRole(String)`

**JNDI:** access to `java:comp/env`

**Res:** access to Resource manager and enterprise beans

### Legend:

**HOME:** access to `getEJB[Local]Home()`

**ID:** access to `getEJB[Local]Object()`

**Tx:** access to `getUserTransaction()`

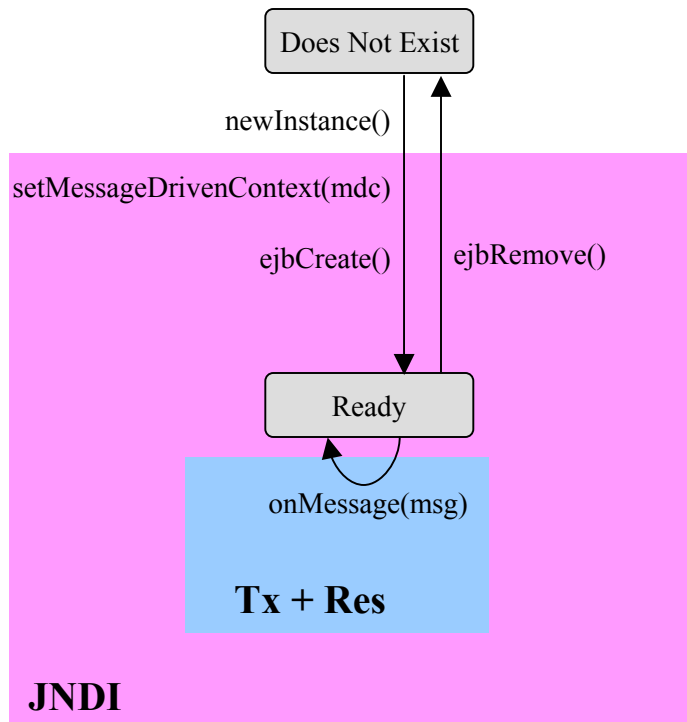
**Sec:** access to `getCallerPrincipal()` and `isCallerInRole(String)`

**JNDI:** access to `java:comp/env`

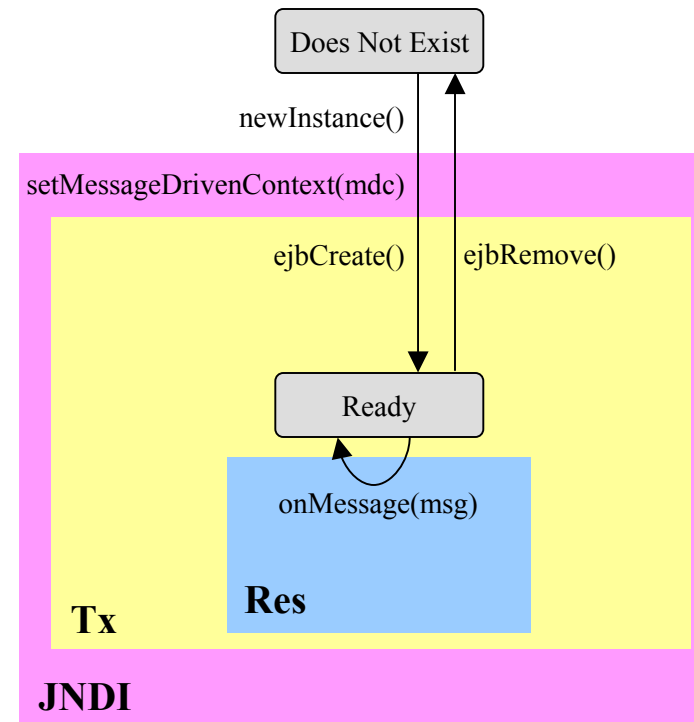
**Res:** access to UserTransaction interface, Resource manager, and enterprise beans

# Message-driven beans

## CMT



## BMT



**Legend:**

**Tx:** access to `getRollbackOnly()` and `setRollbackOnly()`

**JNDI:** access to `java:comp/env`

**Res:** access to Resource manager and enterprise beans

**Legend:**

**Tx:** access to `getUserTransaction()`

**JNDI:** access to `java:comp/env`

**Res:** access to `UserTransaction` interface, Resource manager, and enterprise beans